

Introduction to Beekeeping



Eugene Woller - Gentle Breeze Honey, Inc. - Mt. Horeb, WI

February 9, 2007

Who Lives in the Hive



- Worker (females):
21 days egg to adult
- Drone (males):
24 days egg to adult
- Queen (1 per hive): 16 days egg to adult



Worker, Drone, Queen (marked with dot)

Honeybee Development



- Eggs
 - found in central brood chamber
 - eggs show queen is present
- Larvae
- Pupa



Equipment



- Brood chambers (wooden hive boxes)
- Hive tool
- Smoker
- Bee brush
- Hat with veil, coveralls, gloves
- Bees (2 lb. package) and queen
- Beginner kit includes basic equipment: \$140 (not including bees, brush)



Photo: beebrothers.org

Parts of a Beehive

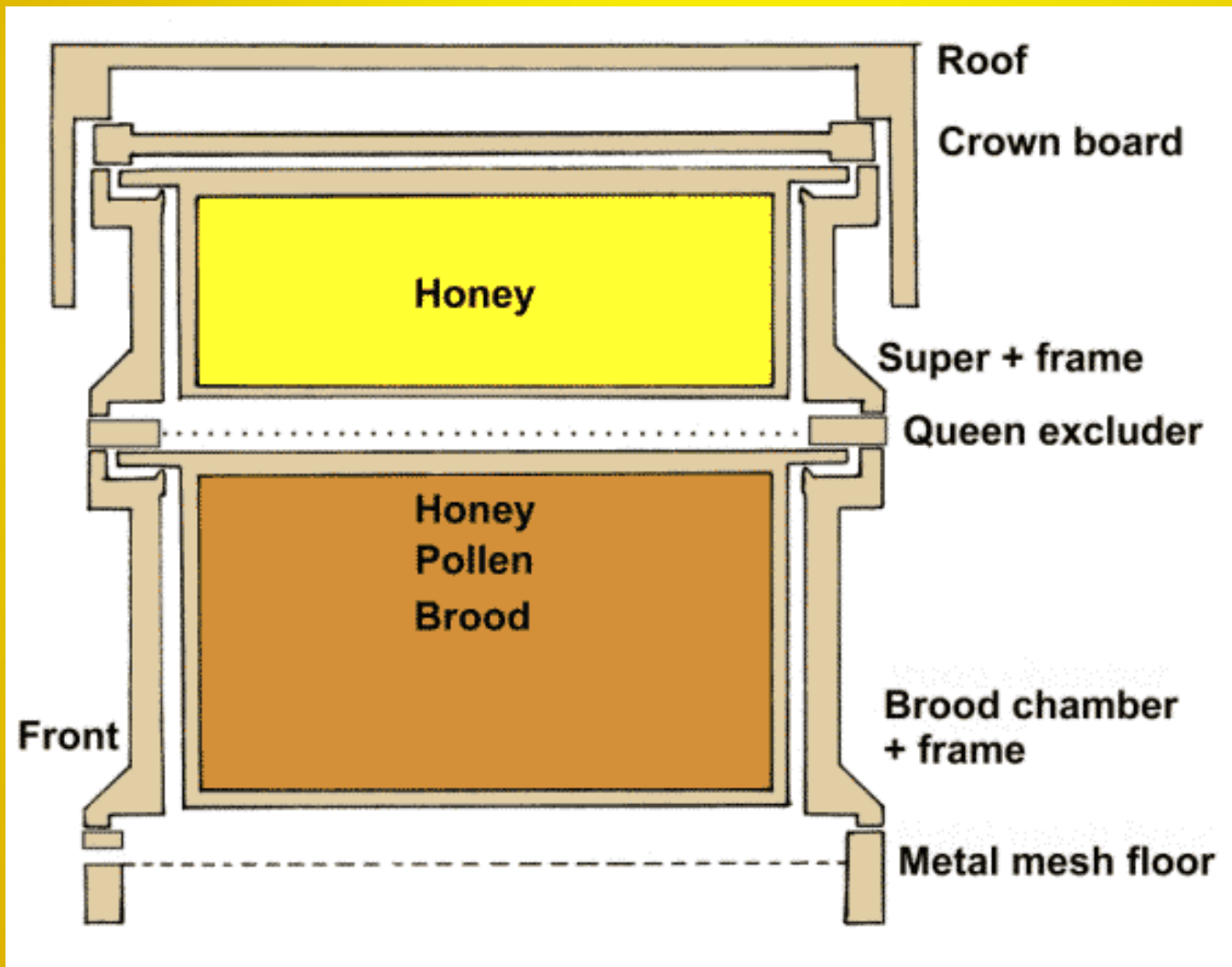


Photo: mygarden.me.uk

Where to Site Hives



- South facing, out of wind
- Sun, shade, flowers, and water
- Will forage 2 miles
- Next to something tall
- Check local laws



Beekeeping Seasons ■ Spring



- Install package bees. Feed bees syrup (7:3 sugar to water)
- 10 days: ensure queen is laying—check every 20 days thereafter
- Continue feeding syrup as needed while bees draw out comb



Beekeeping Seasons ■ Summer



- Stop syrup when sufficient honey flow begins
- Add second brood chamber under first one
- Leave all honey the first summer for bees' winter food



Beekeeping Seasons ■ Fall



- Medicate with *Fumidol B* to prevent Nosema
- Feed sugar syrup if necessary for winter food supply
- Winterize hive (close bottom entrance and lower flight holes)



Beekeeping Seasons ■ Winter



- Wrap the hive (optional)
- Do not disturb



Extracting



- Harvest in August—
year 2
- Equipment:
 - bee brush
 - hand extractor
 - hot knife
 - containers



Photo: bindaree.com.au

Healthy Hives



- Mites
- American Foulbrood
- Nosema
- Colony Collapse Disorder



Photo: cosmosmagazine.com

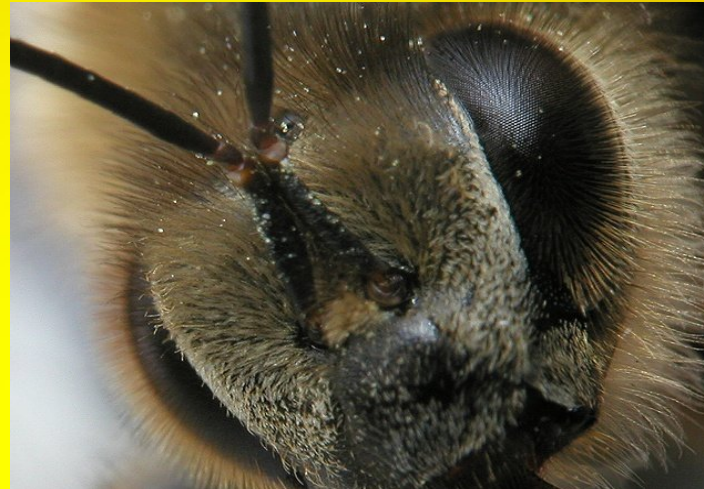
Photo: answers.com



Flower Attraction



- Blue, purple, yellow—sweet scent
- Simple flower forms with short or no tubes
- White clover, aster, borage, goldenrod, lavender, oregano, sage, rosemary, lamb's ear, sunflower (not pollenless), purple coneflower, autumn joy sedum, mint family



Further Information & Sources



- www.gentlebreezehoney.com
(608) 832-4876
(queens, honey, and candles)
- www.kelleybees.com (equipment)
- www.mannlakeltd.com (equipment)
- www.dadant.com (equipment)
- Lee Heine, Dadant
(920) 261- 5363
(2 lb. package bees, \$53)
- www.beelab.osu.edu (attracting honeybees to your garden)

