

Beginning with Honey Bees

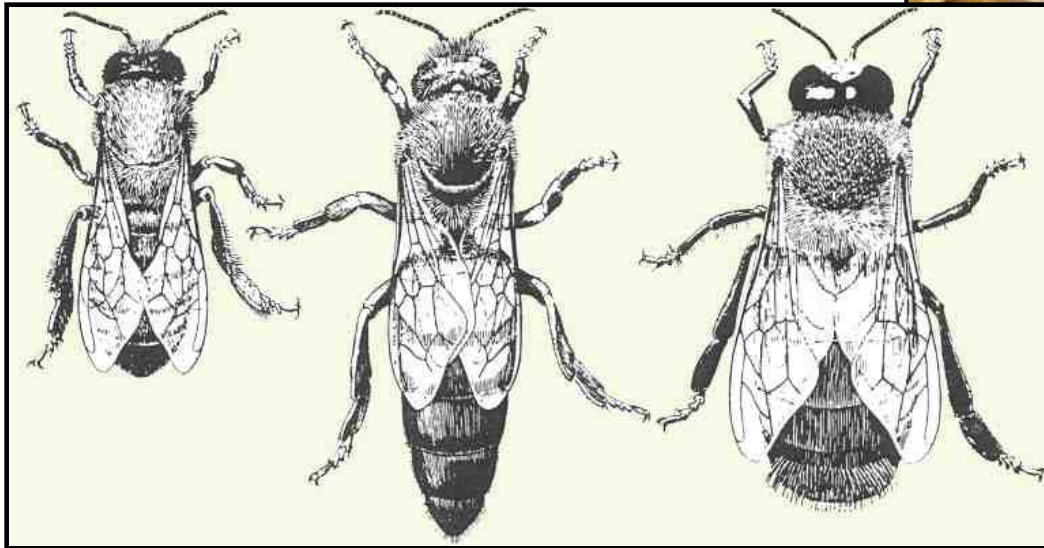


What can be expected of the bees? Of beekeeping?

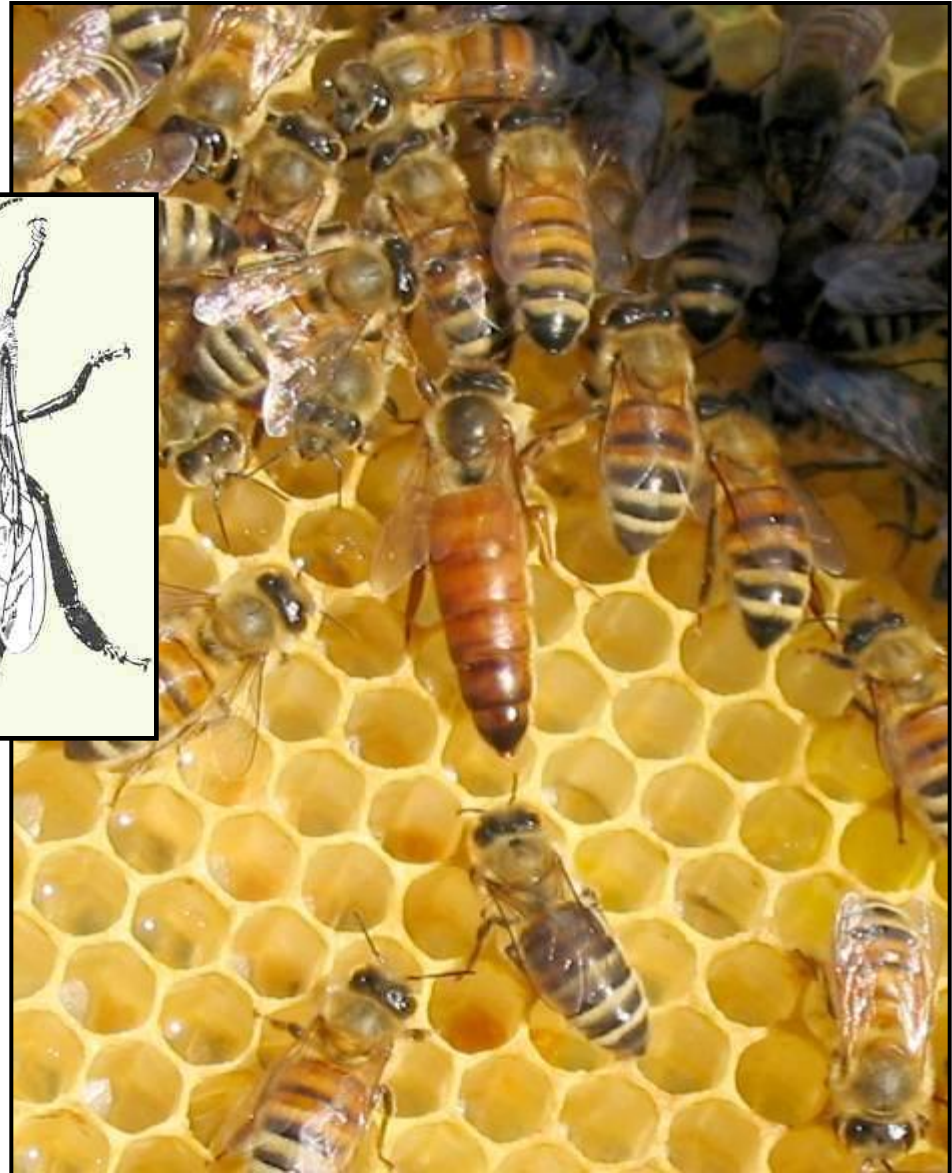


The Honey Bee Colony

Sexes & Castes:



- Worker
- Queen
- Drone



What is a Honey Bee?

Complete Metamorphosis –
egg



What is a Honey Bee?

Complete Metamorphosis –
larvae



What is a Honey Bee?

Complete Metamorphosis –
pupae



What is a Honey Bee?

Complete Metamorphosis –
adult



Highly Specialized Body Structure



Worker



Queen



Drone





Sidenote: Another Organism in Your Hive



Varroa

What are they up to right now?



Urban Beekeeping



Where to Locate your Bees

Sunny

Water Source

Windbreak

Flat & Accessible

Avoid Damp, Humid environments

Hives facing South-ish

Neighbor Concerns

Pesticide Concerns

Livestock Concerns



Diversity is pretty important

- understatement



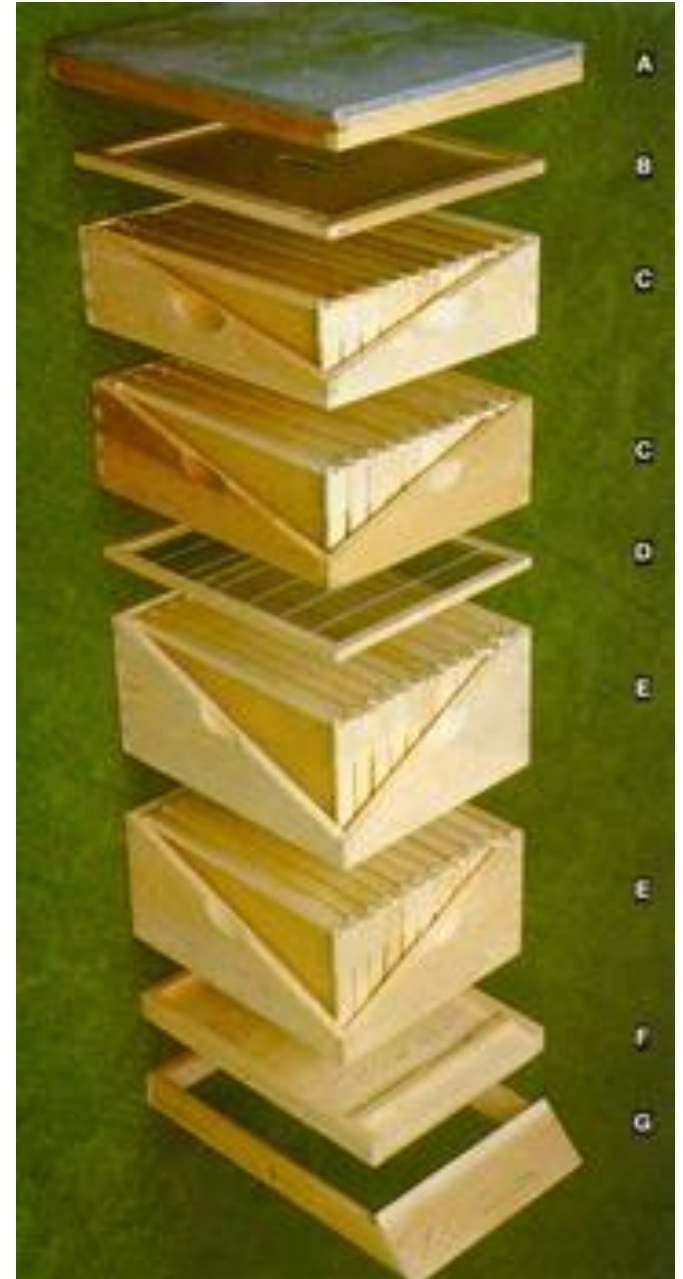
Stings

Reactions to bee venom



Hive Components

- Outer cover
- Inner cover
- Supers with frames
- Queen Excluder
- Hive bodies with frames
- Entrance reducer
- Bottom board
- Hive stand



Smoker



Hive Tool



Veil



PHOTO: DAVID YELLEN



Bee Gloves



Bee Suit



Springtime in the Beekeepers' Year: Starting a new colony



Receiving your Bees

- A Hive can be started from a:
 - Package
 - Nuc
 - Established Colony
 - Swarm
- **Packages** are often the ideal (and recommended) method for beginning beekeepers.
- Used equipment commonly carries pests, parasites, diseases, & contaminants into your brand new apiary! **Be Aware! Require inspection of used equipment prior to sale / introduction!**

Package Bee Installation

- Remove a few frames from center of hive.
- Shake & Rap the bees out of the package into their new home.



Package Bee Installation

- Replace frames into hive.



Package Bee Installation

- Suspend the queen cage between two central frames.



Package Bee Installation

- You're not finished until you feed the bees.
- We recommend using a hive-top feeder.



Foundation Becomes Comb



Workers Carrying Dandelion Pollen



Worker Foraging for Nectar



Worker Collecting Water



Using your Smoker

- Why?
- How?
- What to burn?
- Keeping it lit...



Good Fuel, Tightly Packed =
Cool, White Dependable Smoke

Good Pattern Reflects a Good Queen & a Healthy Hive



Calendar for 1st Year with Bees

- **April & May** - Spring Maintenance, Build-Up, Swarm “Control”, IPM (Integrated Pest Management)
- **June thru August** - Honey Flow & Supering, Doing your part for the IHPA at the State Fair
- **September** – Honey Removal & IPM, Processing of honey and hive products
- **October** – Feeding if Necessary, IPM, Winter Preparations
- **November thru March** – Education, Equipment Maintenance, Preparations for spring, Occasional quick checks when weather permits

Summer / Honey Flow

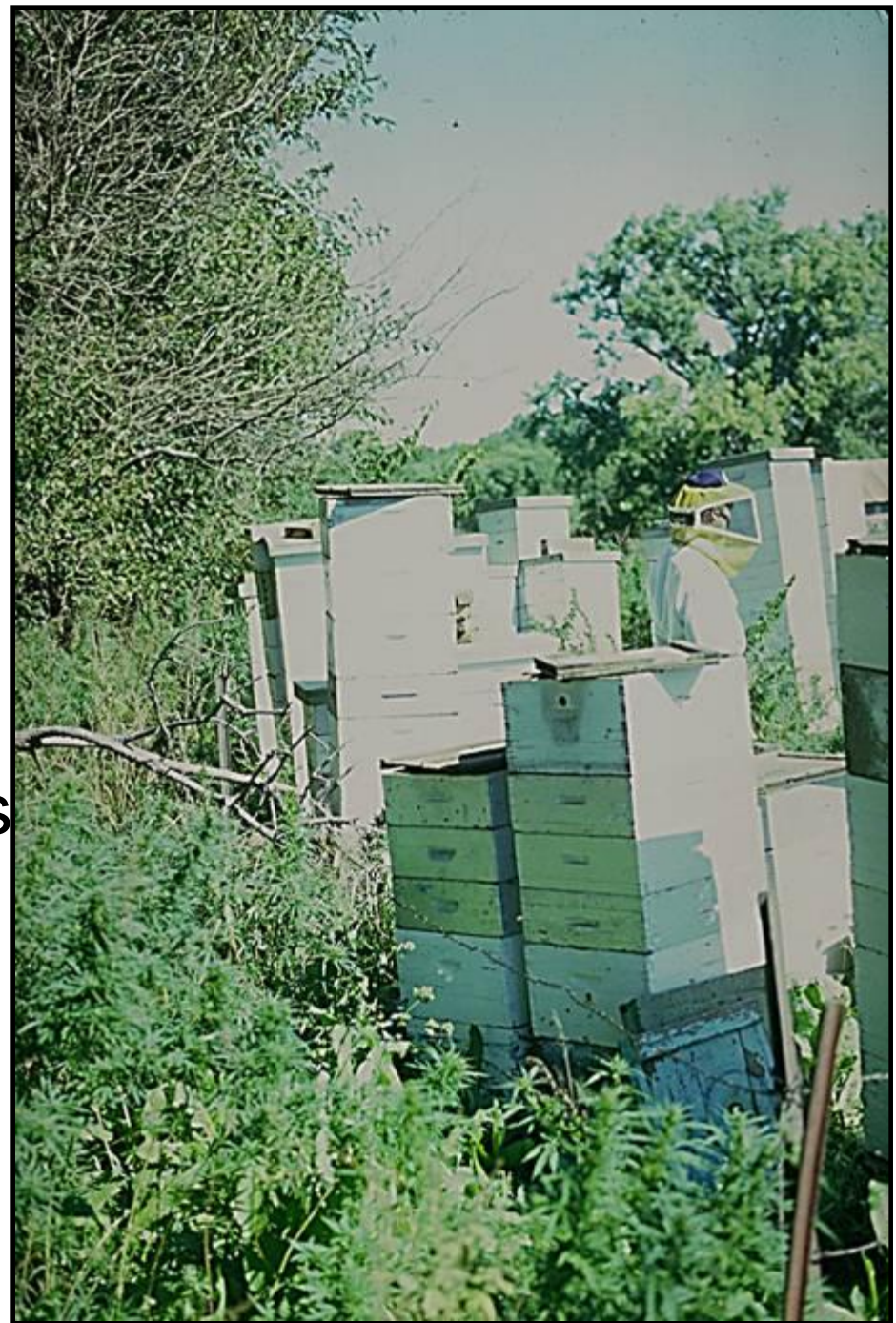


Adding Honey Supers

Stay a step ahead of the bees' need for space

Avoid overcrowding

Make sure the bees always have room to store more surplus honey





Removing Honey from Colonies



Uncapping Honey Frames



Extracting Honey from Uncapped Frames



Spinning Honey from the Frames



Straining from the Extractor

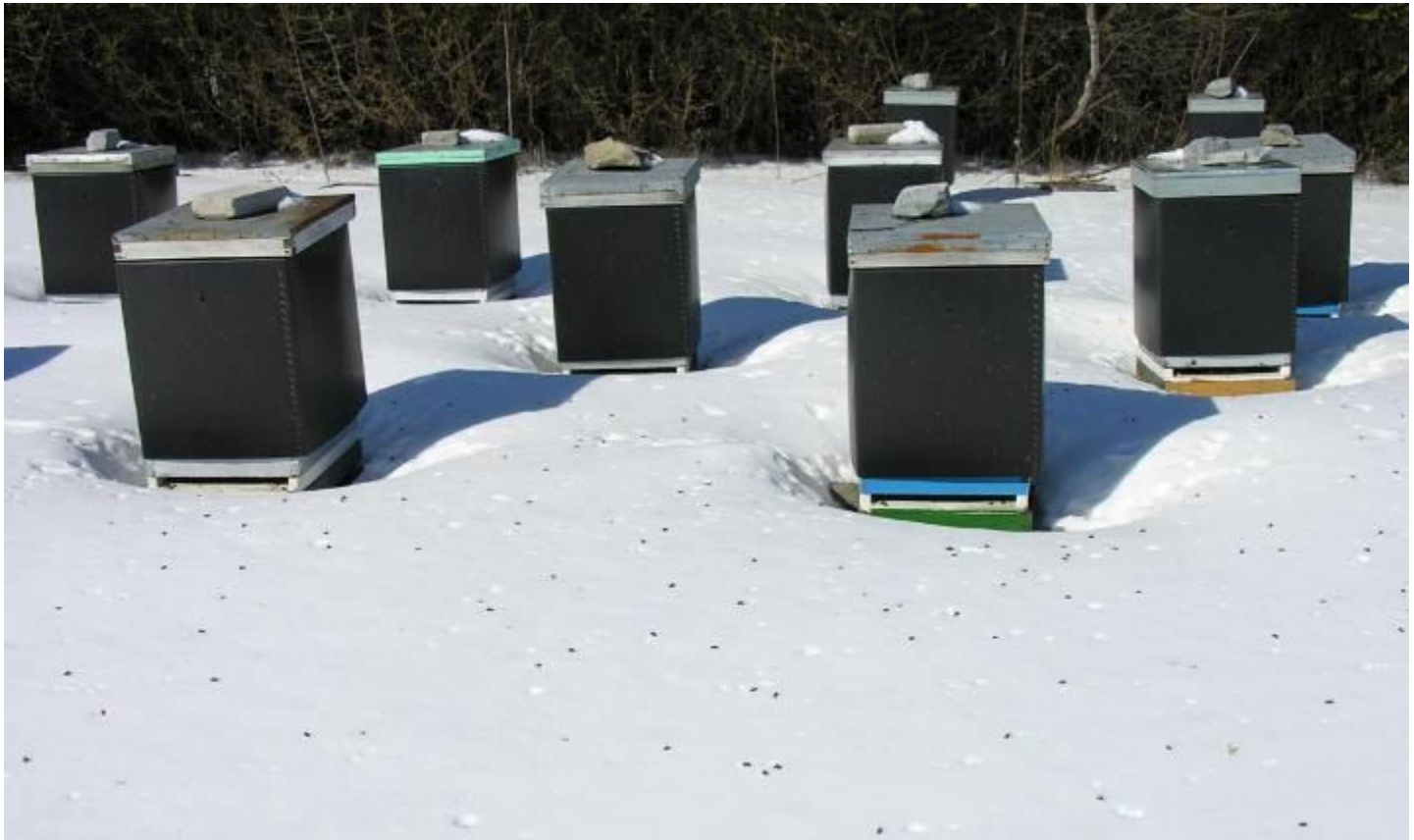


Bottling



VARROA





Andrew.Joseph@IowaAgriculture.gov

515 725 1481

Thank you.